



Fire Door Inspection Report
Conducted for
Compton Property Management Ltd
At
The Linx Building
10 Naples Street & 25 Simpson Street
Manchester
M4 4AS

Prepared by Gary Fenn of Gemini Building Contractors
Conducted between 9th-11th March 2023

Gemini Building Contractors Ltd T/A "Gemini Building Contractors"

Registered No: 04608946 (Registered in England and Wales) Registered Office: 12a Sun Street, Waltham Abbey, Essex EN9 1EE



Disclaimer

The assessor confirms that the inspection to the door numbers referred to in the attached schedule has been completed, inspected, tested, maintained and surveyed, where applicable, to Article 17 of the Regulatory Reform (Fire Safety Order) 2005.

The assessor certified that the fire door sets identified on the attached schedule have been inspected and labelled as required by the appropriate regulatory authorities in accordance with Regulatory reform (Fire Safety order) 2005.

Inspectors Notes

All of the doors inspected, both flat entrance and communal doors have failed, without exception. The main causes for failure are the irregular perimeter gaps between the doors and the frames and the absence of intumescent hinge and lock keep pads. These doors should be adjusted and the correct intumescent barriers installed. Some of the door sets are beyond repair and require a complete replacement.

A large amount of the individual flat doors has loose lock sets, which need to be securely refixed and most of the doors have damaged to the leading edge of the door, caused by the internal security door chain. A heat resistant filler and fire resistant paint can be use as a cost effective way of repair. We would also recommend the removal of the security chain to prevent a reoccurrence of the damage.

Access was unavailable to some of the flat entrance doors during our time of site, it would be save to assume that these doors would also fail for the same reasons highlighted within our report.

Access to the fire riser cupboards was unavailable during the times of our site attendance however, based on a visual inspection of the external face of the doors sets, all of these doors without exception have failed! From what we could ascertain all of the door sets would need to be replaced to achieve compliancy.

Four or the individual flats have a glazed metal frame and door incorporated as the main entrance to the dwelling, which was not a fire rated installation. It was noted that the internal doors where installed as an FR30 installation and where meant to act as the primary protection to the external walkways in the event of a escape situation. The internal doors to these flats were not included in our survey.

Doors Overview – Level 0															
Door ID	Dimensions	Door Rating	Door Material	Frame Material	Door Type	Location	Frame Condition	Hinges Condition	Lockset Condition	Seals Condition	Closer Condition	Signage Condition	Gaps Condition	Door Condition	Structure Condition
Fire Door. North Block Car park															
	825 x 2010 x 55	FD60	Wood	Wood	Single	Basement	F	P	N/A	F	P	P	F	F	P
Fire Door North Block stair case															
	825 x 2010 x 44	FD60	Wood	Wood	Single	Basement	F	F	N/A	F	F	F	F	F	F
Fire Door North Block stair case															
	825 x 2010 x 55	FD60	Wood	Wood	Single	Ground Floor	P	F	N/A	F	F	P	F	P	P
Fire Door South Block Basement															
	825 x 2010 x 55	FD60	Wood	Wood	Single	Basement	P	P	N/A	F	F	P	F	P	P
Fire Door South Block Stair Case Ground Floor															
	825 x 2010 x 55	FD60	Wood	Wood	Single	Ground Floor	P	P	N/A	F	P	P	F	P	P
Fire Door South Block Communal Stair Case Ground Floor															
	825 x 2040 x 55	FD60	Wood	Wood	Single	Ground Floor	P	P	N/A	F	F	P	F	F	P
001	815 x 2015 x 44	FD30	Wood	Wood	Single	Ground Floor	P	F	F	P	P	N/A	F	F	P
002	815 x 2015 x 44	FD30	Wood	Wood	Single	Ground Floor	F	F	F	F	P	N/A	F	F	P
003	Not Available														
004	Not Available														
005	Not Available														
006	Not Available														
007	815 x 2015 x 44	FD30	Wood	Wood	Single	Ground Floor	P	P	F	F	P	N/A	F	F	P
008	815 x 2015 x 44	FD30	Wood	Wood	Single	Ground Floor	P	P	F	F	F	N/A	F	F	P
009	825 x 2010 x 44	FD30	Wood	Wood	Single	Ground Floor	P	P	F	F	F	N/A	F	P	P
010	Not Available														
011	825 x 2010 x 44	FD30	Wood	Wood	Single	Ground Floor	P	P	P	F	F	N/A	F	P	P
012	825 x 2010 x 44	FD30	Wood	Wood	Single	Ground Floor	F	P	P	F	F	N/A	P	P	P
013	815 x 2018 x 44	FD30	Wood	Wood	Single	Ground Floor	F	F	F	F	P	N/A	F	F	P
014	815 x 2015 x 44	FD30	Wood	Wood	Single	Ground Floor	P	P	P	F	P	N/A	P	P	P
015	820 x 2010 x 44	FD30	Wood	Wood	Single	Ground Floor	P	P	F	F	P	N/A	F	F	P
016	815 x 2050 x 44	FD30	Wood	Wood	Single	Ground Floor	F	P	P	F	P	N/A	F	F	P

Level 0 – Photos



Electrical Cupboard



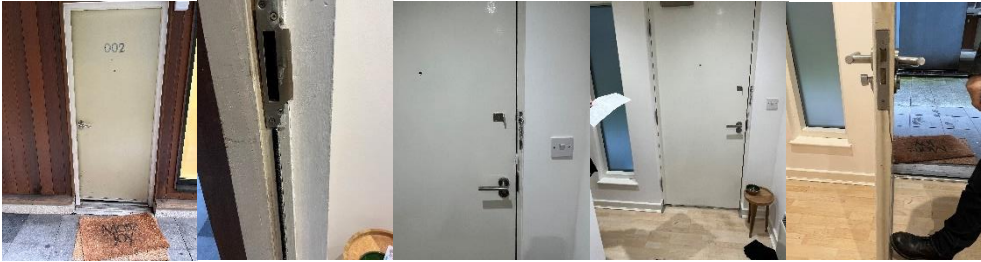
Communal Hallway Door



Flat 001



Flat 002



Flat 003



Flat 004



Flat 005



Flat 006



Flat 007



Flat 008



Flat 009



Flat 011



Flat 012



Flat 013



Flat 014



Flat 015



Flat 016



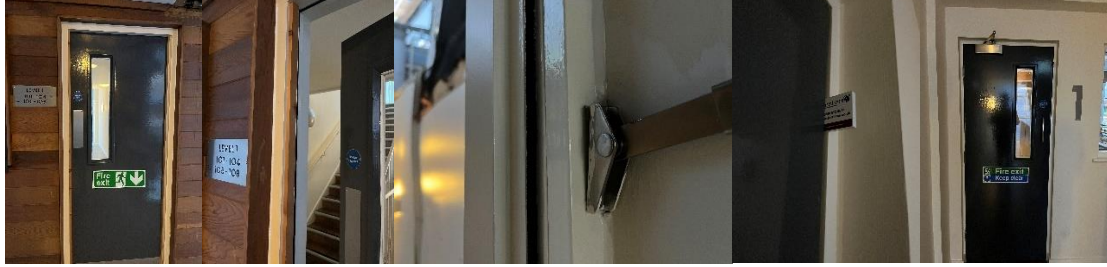
Notes

001	FRAME - No Faults. HINGES - No Intumescent hinge pads installed. LOCKSET - No Intumescent Pad, handle loose and screws missing. SEALS - No Faults. CLOSER - No faults. SIGNAGE - N/A. GAPS - Ease & Adjust. DOOR - Damage to Door needs to be made good. STRUCTURE – No Faults. DOOR FAILED
002	FRAME - Lock keep over cut. HINGES - No Intumescent hinge pads installed. LOCKSET - No Intumescent Pad, handle loose and screws missing. SEALS - Seals to Hinge and Lock set missing. CLOSER - No faults. SIGNAGE - N/A. GAPS - Unable to Ease & Adjust. Gap excessive. DOOR - Door split. New door size 827 x 2010 x 44. STRUCTURE - No Faults. DOOR FAILED
003	Not Available
004	Not Available
005	Not Available
006	Not Available
007	FRAME - No Faults. HINGES - No Faults. LOCKSET – Loose handle additional fixing required. SEALS – No hinge or lock keep pads. CLOSER - No faults. SIGNAGE - N/A. GAPS - Unable to Ease & Adjust. DOOR - To replace door. 823 x 2010 x 44. STRUCTURE – No Faults. DOOR FAILED
008	FRAME - No Faults. HINGES - No Faults. LOCKSET - Loose handle, additional screws required. SEALS - No Intumescent pads on hinge and lock keep. Intumescent perimeter strips missing and detached. CLOSER - Ease & Adjust and not latching. SIGNAGE - N/A. GAPS - Ease & Adjust. DOOR - Make good edge of door. STRUCTURE - No Faults. DOOR FAILED
009	FRAME - No Faults. HINGES - No Faults. LOCKSET - Loose handle, screws need to be tightened SEALS – No Intumescent pads on hinge and lock keep. CLOSER - Cover missing. SIGNAGE - N/A. GAPS - Ease & Adjust. DOOR – No faults. STRUCTURE - No Faults. DOOR FAILED
010	Not Available
011	FRAME - No Faults. HINGES - No Faults. LOCKSET - Loose handle, additional screws required. SEALS No Intumescent pads on hinge and lock keep. Intumescent perimeter strips missing and detached. CLOSER - Ease & Adjust not latching. SIGNAGE - N/A. GAPS - Ease & Adjust. DOOR - Make good edge of door. STRUCTURE - No Faults. DOOR FAILED
012	FRAME – Make good split in frame. HINGES - No Faults. LOCKSET – No faults. SEALS – No Intumescent pads and no Intumescent keep pads. CLOSER – No cover, not latching. SIGNAGE - N/A. GAPS – No faults. DOOR – No Faults. STRUCTURE - No Faults. DOOR FAILED
013	FRAME – Make good to the bottom frame. HINGES - Screw to middle hinge needs resetting. LOCKSET – Handles loose and needs refixing. SEALS – No Intumescent pads to hinges or lock keep. CLOSER – No faults. SIGNAGE - N/A. GAPS - Ease & Adjust. DOOR - Make good to edge of the door. STRUCTURE - No Faults. DOOR FAILED
014	FRAME – No faults. HINGES - No faults. LOCKSET - No faults. SEALS – No Intumescent pads to hinges and lock keep. CLOSER – Please note, closer to fierce needs adjusting. SIGNAGE - N/A. GAPS - No faults. DOOR - No faults. STRUCTURE - No Faults. DOOR FAILED
015	FRAME – No faults. HINGES - No Faults. LOCKSET – Loose handles.HanH SEALS – No Intumescent pads and no Intumescent keep pads. CLOSER - No Faults. SIGNAGE - N/A. GAPS – Ease and Adjust. DOOR – Gaps excessive. STRUCTURE – Door needs replacing. DOOR FAILED
016	FRAME – Top right hand side frame split. Open joints. HINGES - No Faults. LOCKSET – No Faults. SEALS – Intumescent pads on hinges and keep. CLOSER – No Faults. SIGNAGE - N/A. GAPS – New door required. Gap excessive. DOOR – New door size 823 x 2060 x 44. STRUCTURE - No Faults. DOOR FAILED
Fire Door South Block Stair Case Ground Floor	FRAME - No Faults. HINGES – No Faults. LOCKSET – N/A. SEALS – No Intumescent pads on hinges and keep. CLOSER – No Faults. SIGNAGE No Faults. GAPS – Ease and Adjust. DOOR – No Faults. STRUCTURE - No Faults. DOOR FAILED
Fire Door South Block Communal Stair Case Ground Floor	FRAME - No Faults. HINGES – No Faults. LOCKSET – N/A. SEALS – No Intumescent pads on hinges and keep. CLOSER – Top arm loose. SIGNAGE No Faults. GAPS – New door 830 x 2045 x 55. DOOR – New door with Glass Pyro. STRUCTURE - No Faults. DOOR FAILED

Fire Door North Block Car Park	FRAME – Stops. To be glued and screwed. Missing stops. HINGES - No Faults. LOCKSET – N/A. SEALS – No pads on hinges and keep. No Intumescent strips. CLOSER – No Faults. SIGNAGE – No Faults. GAPS – Ease and Adjust. DOOR – New door 828 x 2040 x 55. STRUCTURE - No Faults. DOOR FAILED
Fire Door North Block Stair Case Basement	FRAME – Stop needed. To be glued and screwed No Intumescent strip. HINGES – Failed. LOCKSET – N/A. SEALS – No Intumescent pads on hinges and keep. CLOSER – Failed. SIGNAGE – Failed. GAPS – Failed. DOOR – New Door 880 x 2070 x 44. Overall Frame size width 100mm. Incorrect door and frame. STRUCTURE – Failed. DOOR FAILED
Fire Door North Block Ground floor Stair Case	FRAME - No Faults. HINGES – Screw missing. LOCKSET – N/A. SEALS – No Intumescent pads on hinges and keep. CLOSER – Cover missing. SIGNAGE No Faults. GAPS – Ease and Adjust. DOOR – No Faults. STRUCTURE - No Faults. DOOR FAILED
Fire Door South Block Basement	FRAME - No Faults. HINGES – No Faults. LOCKSET – N/A. SEALS – No Intumescent pads on hinges. CLOSER – Wrong screws on control arm. SIGNAGE No Faults. GAPS – Ease and Adjust. DOOR – No Faults. STRUCTURE - No Faults. DOOR FAILED

Doors Overview – Level 1															
Door ID	Dimensions	Door Rating	Door Material	Frame Material	Door Type	Location	Frame Condition	Hinges Condition	Lockset Condition	Seals Condition	Closer Condition	Signage Condition	Gaps Condition	Door Condition	Structure Condition
Fire Door North Block 1st Floor															
	825 x 2010 x 55	FD60	Wood	Wood	Single	1st Floor	F	P	N/A	F	P	P	F	P	P
Fire Door South Block Communal Stair Case 1st Floor															
	825 x 2010 x 55	FD60	Wood	Wood	Single	1st Floor	F	P	N/A	F	F	P	F	P	P
101	Not available														
102	825 x 2015 x 44	FD30	Wood	Wood	Single	1st Floor	P	P	F	F	P	N/A	F	F	P
103	815 x 2015 x 44	FD30	Wood	Wood	Single	1st Floor	P	P	P	F	P	N/A	F	F	P
104	825 x 2020 x 44	FD30	Wood	Wood	Single	1st Floor	P	P	F	F	F	N/A	F	F	P
105	Not Available														
106	825 x 2025 x 44	FD30	Wood	Wood	Single	1st Floor	P	P	F	F	P	N/A	F	P	P
107	820 x 2010 x 44	FD30	Wood	Wood	Single	1st Floor	F	P	F	F	F	N/A	F	P	P
108	820 x 2010 x 44	FD30	Wood	Wood	Single	1st Floor	P	F	F	F	F	N/A	F	P	P
109	Not Available														
110	825 x 2010 x 44	FD30	Wood	Wood	Single	1st Floor	P	P	P	F	F	N/A	F	P	P
111	820 x 2010 x 44	FD30	Wood	Wood	Single	1st Floor	P	P	P	F	P	N/A	F	P	P
112	Not Available														
113	820 x 2010 x 44	FD30	Wood	Wood	Single	1st Floor	P	P	F	F	P	N/A	F	F	P
114	820 x 2010 x 44	FD30	Wood	Wood	Single	1st Floor	P	P	P	F	P	N/A	F	P	P
115	825 x 2010 x 44	FD30	Wood	Wood	Single	1st Floor	P	P	P	F	F	N/A	F	F	P
116	820 x 2010 x 44	FD30	Wood	Wood	Single	1st Floor	P	P	P	F	P	N/A	F	P	P

Level 1 – Photos



Flat 101



Flat 102



Flat 103



Flat 104



Flat 105



Flat 107



Flat 108



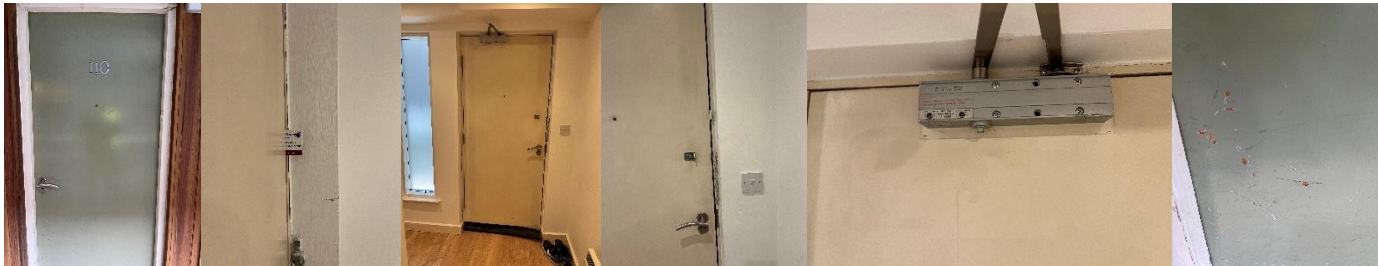
Flat 104



Flat 109



Flat 110



Flat 111



Flat 112



Flat 113



Flat 114



Flat 115



Flat 116



101	Not Available
102	FRAME - No Faults. HINGES - No Faults. LOCKSET – Screws missing on lock cover. SEALS - No Intumescent pads on hinges and keep. CLOSER – No Faults. SIGNAGE - N/A. GAPS - Ease and Adjust. DOOR - New door size 825 x 2015 x 44. STRUCTURE - No Faults. DOOR FAILED
103	FRAME - No Faults. HINGES - No Faults. LOCKSET – No Faults. SEALS - No Intumescent pads on hinges and keep. CLOSER - No Faults. SIGNAGE - N/A. GAPS - New door required. Gap excessive. DOOR - New door size 825 x 2035 x 44. STRUCTURE - No Faults. DOOR FAILED
104	FRAME - No Faults. HINGES - No Faults. LOCKSET – Handle loose. SEALS - No Intumescent pads on hinges and keep. CLOSER - Catching on threshold. SIGNAGE - N/A. GAPS - Ease and Adjust. DOOR – Make good to the door edge. STRUCTURE - No Faults. DOOR FAILED
105	Not Available
106	FRAME - No Faults. HINGES - No Faults. LOCKSET – Handle loose. SEALS - No Intumescent pads on hinges and keep. CLOSER – No Faults. SIGNAGE - N/A. GAPS - Ease and Adjust. DOOR – No Faults. STRUCTURE - No Faults. DOOR FAILED
107	FRAME – Head joint is open. To be made good. HINGES - No Faults. LOCKSET – screw missing on cover. SEALS – Brush intumescent seal missing at head of door and no Intumescent pads on hinges and keep. CLOSER – Ease and Adjust. SIGNAGE - N/A. GAPS - Ease and Adjust. DOOR – No faults. STRUCTURE - No Faults. DOOR FAILED
108	FRAME - No Faults. HINGES – Ease and Adjust. Reset door. LOCKSET – Handle loose. SEALS - No Intumescent pads on hinges and keep. CLOSER – Draft excluder affecting closer. SIGNAGE - N/A. GAPS - Ease and Adjust. DOOR – No faults. STRUCTURE - No Faults. DOOR FAILED
109	Not Available
110	FRAME - No Faults. HINGES - No Faults. LOCKSET – No Faults. SEALS - No Intumescent pads on hinges and keep. CLOSER – Cover missing. SIGNAGE - N/A. GAPS - Ease and Adjust. DOOR – Minor damage to door face. STRUCTURE - No Faults. DOOR FAILED
111	FRAME - No Faults. HINGES - No Faults. LOCKSET – No Faults. SEALS - No Intumescent pads on hinges and keep. CLOSER – Needs ease and adjust. SIGNAGE - N/A. GAPS - Ease and Adjust. DOOR - No Faults. STRUCTURE - No Faults. DOOR FAILED
112	Not Available.
113	FRAME - No Faults. HINGES - No Faults. LOCKSET – Handles are loose. Keep cover missing. SEALS - No Intumescent pads on hinges and keep. CLOSER – No faults. SIGNAGE - N/A. GAPS - Ease and Adjust. DOOR – Door split. Replacement door 828 x 2040 x 44. STRUCTURE - No Faults. DOOR FAILED
114	FRAME - No Faults. HINGES - No Faults. LOCKSET – No Faults. SEALS - No Intumescent pads on hinges and keep. CLOSER – No faults. SIGNAGE - N/A. GAPS - Ease and Adjust. DOOR – Door split and needs replacing 828 2040 x 44. STRUCTURE - No Faults. DOOR FAILED
115	FRAME - No Faults. HINGES - No Faults. LOCKSET – No Faults. SEALS - No Intumescent pads on hinges and keep. CLOSER – N/A. SIGNAGE - N/A. GAPS - Ease and Adjust. DOOR – Damaged and split. New door 8030 x 2045 x 44. STRUCTURE - No Faults. DOOR FAILED
116	FRAME - No Faults. HINGES - No Faults. LOCKSET – No Faults. SEALS - No Intumescent pads on hinges and keep. CLOSER – No faults. SIGNAGE - N/A. GAPS - Ease and Adjust. DOOR – No Faults. STRUCTURE - No Faults. DOOR FAILED
Fire Door North Block 1st floor	FRAME – Plant on stop. Needs to be glued and screwed. HINGES – No Faults. LOCKSET – N/A. SEALS – No Intumescent pads on hinges and keep. CLOSER – No Faults. SIGNAGE No Faults. GAPS – Ease and Adjust. DOOR – No Faults. STRUCTURE - No Faults. DOOR FAILED
Fire Door South Block Communal Stair Case 1st Floor	FRAME – Plant on stops should be glued and screwed. HINGES – No Faults. LOCKSET – N/A. SEALS – No Intumescent pads on hinges and keep. CLOSER – Top arm loose. SIGNAGE No Faults. GAPS – Ease and Adjust. DOOR – Pyro glass in situ. STRUCTURE - No Faults. DOOR FAILED

Doors Overview - Level 2															
Door ID	Dimensions	Door Rating	Door Material	Frame Material	Door Type	Location	Frame Condition	Hinges Condition	Lockset Condition	Seals Condition	Closer Condition	Signage Condition	Gaps Condition	Door Condition	Structure Condition
Fire Door North Block 2nd Floor															
	825 x 2010 x 55	FD60	Wood	Wood	Single	2nd Floor	F	F	N/A	F	P	P	F	P	P
Fire Door South Block Communal Stair Case 2nd Floor															
	825 x 2101 x 55	FD60	Wood	Wood	Single	2nd Floor	F	P	N/A	F	P	P	F	P	P
201	Not Available														
202	825 x 2010 x 44	FD30	Wood	Wood	Single	2nd Floor	P	P	F	F	F	N/A	F	P	P
203	Not Available														
204	Not Available														
205	825 x 2010 x 44	FD30	Wood	Wood	Single	2nd Floor	P	P	P	F	P	N/A	F	F	P
206	825 x 2010 x 44	FD30	Wood	Wood	Single	2nd Floor	P	P	P	F	P	N/A	F	F	F
207	825 x 2010 x 44	FD30	Wood	Wood	Single	2nd Floor	P	P	P	F	F	N/A	F	P	P
208	825 x 2010 x 44	FD30	Wood	Wood	Single	2nd Floor	F	P	F	F	P	N/A	F	P	P
209	825 x 2020 x 44	FD30	Metal	Metal	Single	2nd Floor	P	P	P	F	P	N/A	P	P	P
210	825 x 2010 x 44	FD30	Wood	Wood	Single	2nd Floor	P	P	P	F	P	N/A	F	P	P
211	820 x 2010 x 44	FD30	Wood	Wood	Single	2nd Floor	P	P	P	F	F	N/A	F	F	P
212	820 x 2010 x 44	FD30	Wood	Wood	Single	2nd Floor	P	P	P	F	F	N/A	F	F	P
213	820 x 2010 x 44	FD30	Wood	Wood	Single	2nd Floor	P	P	P	F	F	N/A	F	F	P
214	820 x 2010 x 44	FD30	Wood	Wood	Single	2nd Floor	P	P	P	F	P	N/A	F	F	P
215	825 x 2010 x 44	FD30	Wood	Wood	Single	2nd Floor	P	P	P	F	P	N/A	P	P	P
216	820 x 2010 x 44	FD30	Wood	Wood	Single	2nd Floor	P	P	F	F	F	N/A	F	F	P
217	820 x 2010 x 44	FD30	Wood	Wood	Single	2nd Floor	P	P	F	F	P	N/A	F	P	P
218	Not Available														

Level 2 – Photos



Communal Hallway



Flat 201



Flat 202



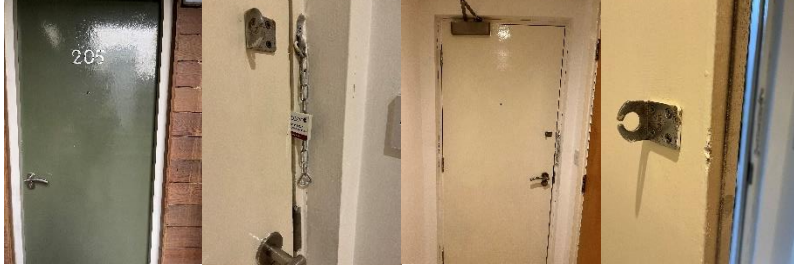
Flat 203



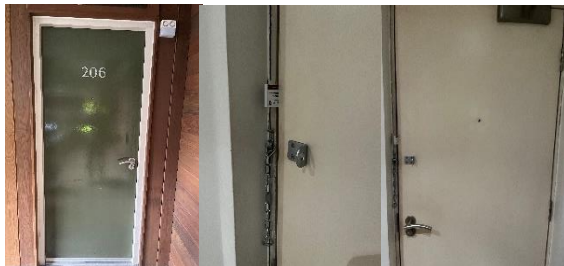
Flat 204



Flat 205



Flat 206



Flat 207



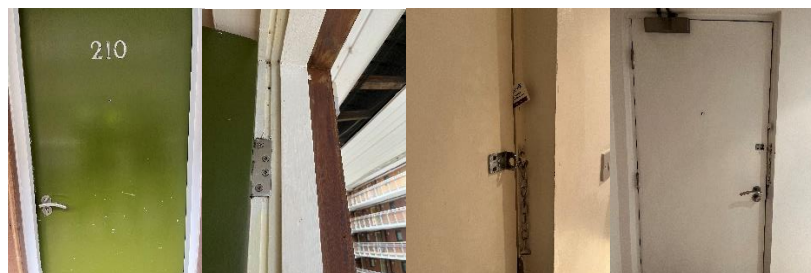
Flat 208



Flat 209



Flat 210



Flat 211



Flat 212



Flat 213



Flat 214



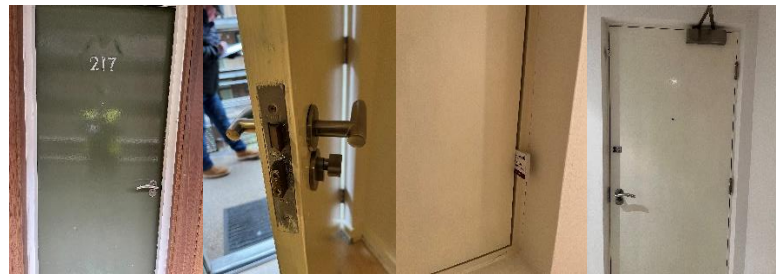
Flat 215



Flat 216



Flat 217



Flat 218



201	Not Available
202	FRAME - No Faults. HINGES - No Faults. LOCKSET – Handle loose. Screw missing to keep plate. SEALS - No Intumescent pads on hinges and keep. CLOSER – Ease and Adjust. SIGNAGE - N/A. GAPS - Ease and Adjust. DOOR – No Faults. STRUCTURE - No Faults. DOOR FAILED
203	Not Available
204	Not Available
205	FRAME - No Faults. HINGES - No Faults. LOCKSET – No Faults. SEALS - No Intumescent pads on hinges and keep. CLOSER – No faults. SIGNAGE - N/A. GAPS - Ease and Adjust. DOOR – Can be made good. STRUCTURE - No Faults. DOOR FAILED
206	FRAME - No Faults. HINGES - No Faults. LOCKSET – No Faults. SEALS - No Intumescent pads on hinges and keep. CLOSER – Ease and Adjust. SIGNAGE - N/A. GAPS – Excessive gaps. DOOR – New door needed. 825 x 2020 x 44. STRUCTURE – Frame is loose. Needs securing. DOOR FAILED
207	FRAME - No Faults. HINGES - No Faults. LOCKSET – No Faults. SEALS - No Intumescent pads on hinges and keep. CLOSER – Screw missing on unit. SIGNAGE - N/A. GAPS - Ease & Adjust. DOOR – No Faults. STRUCTURE - No Faults. DOOR FAILED
208	FRAME – Need to repair joint to head open. HINGES - No Faults. LOCKSET – Loose. Needs adjusting screw to keep at an angle. SEALS - No Intumescent pads on hinges and keep. CLOSER – No faults. SIGNAGE - N/A. GAPS - Ease & Adjust. DOOR – No Faults. STRUCTURE - No Faults. DOOR FAILED
209	FRAME - No Faults. HINGES - No Faults. LOCKSET – No Faults. SEALS – Unable to establish. Brush seals evident. CLOSER – No faults. SIGNAGE - N/A. GAPS – No Faults. DOOR – No Faults. STRUCTURE - No Faults. DOOR FAILED
210	FRAME - No Faults. HINGES - No Faults. LOCKSET – No Faults. SEALS – No combined Intumescent strip to frame and no Intumescent pads on hinges and keep. CLOSER – No faults. SIGNAGE - N/A. GAPS – No Faults. DOOR – No Faults. STRUCTURE - No Faults. DOOR FAILED
211	FRAME - No Faults. HINGES - No Faults. LOCKSET – No Faults. SEALS - Intumescent strip to Jam defective. No Intumescent pads on hinges and keep. CLOSER – Ease and adjust. SIGNAGE - N/A. GAPS – Ease and Adjust. DOOR – Damage to bottom edge. Can be made good. STRUCTURE - No Faults. DOOR FAILED
212	FRAME - No Faults. HINGES - No Faults. LOCKSET – No Faults. SEALS - No Intumescent pads on hinges and keep. CLOSER – No arm to closer. Needs new closer. SIGNAGE - N/A. GAPS – Ease and Adjust. DOOR – Damage to edge of the door. Can be made good. STRUCTURE - No Faults. DOOR FAILED
213	FRAME - No Faults. HINGES - No Faults. LOCKSET – No Faults. SEALS - No Intumescent pads on hinges and keep. CLOSER – Couldn't be tested. Dragging on carpet. SIGNAGE - N/A. GAPS – Gaps excessive. Needs new door. DOOR – New door. STRUCTURE - No Faults. DOOR FAILED
214	FRAME - No Faults. HINGES - No Faults. LOCKSET – No Faults. SEALS - No Intumescent pads on hinges and keep. CLOSER – No faults. SIGNAGE - N/A. GAPS – Ease and Adjust. DOOR – Door can be made good. STRUCTURE - No Faults. DOOR FAILED
215	FRAME - No Faults. HINGES - No Faults. LOCKSET – No Faults. SEALS - No Intumescent pads on hinges and keep. CLOSER – No faults. SIGNAGE - N/A. GAPS – No Faults on Ease and adjust. DOOR – No Faults. STRUCTURE - No Faults. DOOR FAILED
216	FRAME - No Faults. HINGES - No Faults. LOCKSET – Loose Handle. SEALS - No Intumescent pads on hinges and keep. CLOSER – Ease and Adjust. SIGNAGE - N/A. GAPS – Gaps excessive. Needs new door. DOOR – New door 828 x 2005 x 44. STRUCTURE - No Faults. DOOR FAILED
217	FRAME - No Faults. HINGES - No Faults. LOCKSET – Loose Handle. SEALS - No Intumescent pads on hinges and keep. CLOSER – No faults. SIGNAGE - N/A. GAPS – Ease and Adjust. DOOR – No Faults. STRUCTURE - No Faults. DOOR FAILED
218	Not Available.
Fire Door North Block 2nd floor	FRAME - Plant on stop. Needs to be glued and screwed. HINGES – Screws incorrectly fitted. LOCKSET – N/A. SEALS – No Intumescent pads on hinges and keep. CLOSER – No Faults. SIGNAGE No Faults. GAPS – Ease and Adjust. DOOR – No Faults. STRUCTURE - No Faults. DOOR FAILED
Fire Door South Block Communal Stair Case 2nd Floor	FRAME - Plant on stops should be glued and screwed. HINGES – No Faults. LOCKSET – N/A. SEALS – No Intumescent pads on hinges and keep. CLOSER – No Faults. SIGNAGE No Faults. GAPS – Ease and Adjust. DOOR - Pyro glass in situ. STRUCTURE - No Faults. DOOR FAILED

Doors Overview - Level 3

Door ID	Dimensions	Door Rating	Door Material	Frame Material	Door Type	Location	Frame Condition	Hinges Condition	Lockset Condition	Seals Condition	Closer Condition	Signage Condition	Gaps Condition	Door Condition	Structure Condition
Fire Door North Block 3rd Floor															
	825 x 2010 x 55	FD60	Wood	Wood	Single	3rd Floor	F	P	N/A	F	P	P	F	P	P
Fire Door South Block Stair Case 3rd floor															
	825 x 2010 x 55	FD60	Wood	Wood	Single	3rd Floor	P	F	N/A	F	P	P	F	P	P
301	Not Available														
302	825 x 2010 x 44	FD30	Wood	Wood	Single	3rd floor	P	P	P	F	F	N/A	F	F	P
303	Not Available														
304	Not Available														
305	825 x 2010 x 44	FD30	Wood	Wood	Single	3rd floor	P	F	F	F	P	N/A	F	F	P
306	825 x 2010 x 44	FD30	Wood	Wood	Single	3rd floor	P	F	P	F	P	N/A	F	P	P
307	825 x 2030 x 44	FD30	Wood	Wood	Single	3rd floor	P	P	P	F	F	N/A	F	F	P
308	820 x 2010 x 44	FD30	Wood	Wood	Single	3rd floor	P	P	P	F	P	N/A	F	P	P
309	820 x 2010 x 44	FD30	Wood	Wood	Single	3rd floor	P	P	F	F	P	N/A	F	F	P
310	825 x 2010 x 44	FD30	Wood	Wood	Single	3rd floor	P	P	P	F	F	N/A	F	F	P
311	825 x 2010 x 44	FD30	Wood	Wood	Single	3rd floor	P	P	P	F	F	N/A	F	P	P
312	820 x 2010 x 44	FD30	Wood	Wood	Single	3rd floor	F	P	P	F	P	N/A	F	P	F
313	825 x 2010 x 44	FD30	Wood	Wood	Single	3rd floor	P	P	F	F	F	N/A	F	F	P
314	825 x 2010 x 44	FD30	Wood	Wood	Single	3rd floor	P	P	F	F	F	N/A	F	P	P
315	825 x 2010 x 44	FD30	Wood	Wood	Single	3rd floor	P	P	P	F	P	N/A	F	F	P
316	825 x 2010 x 44	FD30	Wood	Wood	Single	3rd floor	P	P	F	F	F	N/A	F	F	P

Level 3 – Photos



Flat 301



Flat 302



Flat 303



Flat 304



Flat 305



Flat 306



Flat 307



Flat 308



Flat 309



Flat 310



Flat 311



Flat 312



Flat 313



Flat 314



Flat 315



Flat 316



301	Not Available.
302	FRAME - No Faults. HINGES - No Faults. LOCKSET – No Faults. SEALS - No Intumescent pads on hinges and keep. CLOSER – Change seal at the bottom of the door. SIGNAGE - N/A. GAPS – Ease and Adjust DOOR – Damage to the edge of door. Door to be made good. STRUCTURE - No Faults. DOOR FAILED
303	Not Available.
304	Not Available.
305	FRAME - No Faults. HINGES – Screws missing. LOCKSET – Handles loose. SEALS - No Intumescent pads on hinges and keep. CLOSER – No faults. SIGNAGE - N/A. GAPS – Ease and adjust. DOOR – Damage to the edge of the door. Door to be made good. STRUCTURE - No Faults. DOOR FAILED
306	FRAME - No Faults. HINGES – Covered in tape. Unable to survey. LOCKSET – No Faults. SEALS – Missing Intumescent brush strip. No Intumescent pads on hinges and keep. CLOSER – No Faults. SIGNAGE - N/A. GAPS – Ease and Adjust. DOOR – No Faults. STRUCTURE - No Faults. DOOR FAILED
307	FRAME - No Faults. HINGES - No Faults. LOCKSET – No Faults. SEALS - No Intumescent pads on hinges and keep. CLOSER – No Closer. SIGNAGE - N/A. GAPS – Ease and Adjust. DOOR – Top of the door to be made good. STRUCTURE - No Faults. DOOR FAILED
308	FRAME - No Faults. HINGES - No Faults. LOCKSET – No Faults. SEALS - No Intumescent pads on hinges and keep. CLOSER – No Faults. SIGNAGE - N/A. GAPS – Ease and Adjust. DOOR – No Faults. STRUCTURE - No Faults. DOOR FAILED
309	FRAME - No Faults. HINGES - No Faults. LOCKSET – Cover missing to lock plate. SEALS - No Intumescent pads on hinges and keep. CLOSER – No Faults. SIGNAGE - N/A. GAPS – Ease and Adjust. DOOR – Damage to leading on edge of door. STRUCTURE - No Faults. DOOR FAILED
310	FRAME - No Faults. HINGES - No Faults. LOCKSET – No Faults. SEALS - No Intumescent pads on hinges and keep. CLOSER – Arm fixing loose. SIGNAGE - N/A. GAPS – Ease and Adjust. DOOR – Damage to the edge of door. Door to be made good. STRUCTURE - No Faults. DOOR FAILED
311	FRAME - No Faults. HINGES - No Faults. LOCKSET – No Faults. SEALS - No Intumescent pads on hinges and keep. CLOSER – Can be adjusted. Snagging on threshold. SIGNAGE - N/A. GAPS – Ease and Adjust. DOOR – No Faults. STRUCTURE - No Faults. DOOR FAILED
312	FRAME – Needs to be replaced. Frame rotten. 100W x 45D x 2090 overall. HINGES - No Faults. LOCKSET – No Faults. SEALS - No Intumescent pads on hinges and keep. CLOSER – No Faults. SIGNAGE - N/A. GAPS – Ease and Adjust. DOOR – No Faults. STRUCTURE – Due to frame condition. DOOR FAILED
313	FRAME - No Faults. HINGES - No Faults. LOCKSET – Extra Fixings and loose handle. SEALS - No Intumescent pads on hinges and keep. CLOSER – Ease and Adjust. Catching on threshold plate. SIGNAGE - N/A. GAPS – Ease and Adjust. DOOR – Damage to the edge of door. Door to be made good. STRUCTURE - No Faults. DOOR FAILED
314	FRAME – Small repair to right hand side of the frame. HINGES - No Faults. LOCKSET – Needs fixing back to the door. Screws missing. Handle loose. Face plate missing to lock. SEALS - No Intumescent pads on hinges and keep. CLOSER – Ease and Adjust. Closes to slow. SIGNAGE - N/A. GAPS – Ease and Adjust. DOOR – Some facial damage. STRUCTURE - No Faults. DOOR FAILED
315	FRAME - No Faults. HINGES - No Faults. LOCKSET – No Faults. SEALS - No Intumescent pads on hinges and keep. CLOSER – No Faults. SIGNAGE - N/A. GAPS – Ease and Adjust. DOOR – Damage to leading edge. STRUCTURE - No Faults. DOOR FAILED
316	FRAME - No Faults. HINGES - No Faults. LOCKSET – Handle loose needs securing. SEALS - No Intumescent pads on hinges and keep. CLOSER – Ease and Adjust. SIGNAGE - N/A. GAPS – Ease and Adjust. DOOR – Damage to top of door and leading edge. STRUCTURE - No Faults. DOOR FAILED
Fire Door North Block 3rd floor	FRAME – Stop needed. Needs to be glued and screwed. HINGES – No Faults. LOCKSET – N/A. SEALS – No Intumescent pads on hinges and keep. Intumescent strips are damaged and need replacing. CLOSER – No Faults. SIGNAGE No Faults. GAPS – Ease and Adjust. DOOR – No Faults. STRUCTURE - No Faults. DOOR FAILED
Fire Door South Block Stair Case 3rd floor	FRAME – No Faults. HINGES – Screws not fitted correctly. LOCKSET – N/A. SEALS – No Intumescent pads on hinges and keep. No Intumescent brush strip on frame. CLOSER – No Faults. SIGNAGE No Faults. GAPS – Ease and Adjust. DOOR – Pyro glass in situ. STRUCTURE - No Faults. DOOR FAILED

Doors Overview - Level 4															
Door ID	Dimensions	Door Rating	Door Material	Frame Material	Door Type	Location	Frame Condition	Hinges Condition	Lockset Condition	Seals Condition	Closer Condition	Signage Condition	Gaps Condition	Door Condition	Structure Condition
Fire Door North Block 4th Floor															
	825 x 2010 x 55	FD60	Wood	Wood	Single	4th Floor	P	P	N/A	F	P	P	F	P	P
Fire Door South Block Stair Case 4th Floor															
	825 x 2010 x 55	FD60	Wood	Wood	Single	4th Floor	F	P	N/A	F	F	P	F	P	P
401	825 x 2010 x 44	FD30	Wood	Wood	Single	4th floor	P	P	F	F	F	N/A	F	F	P
402	825 x 2010 x 44	FD30	Wood	Wood	Single	4th floor	P	F	F	F	F	N/A	F	P	P
403	825 x 2030 x 44	FD30	Wood	Wood	Single	4th floor	P	P	P	F	F	N/A	F	P	P
404	825 x 2012 x 44	FD30	Wood	Wood	Single	4th floor	P	P	P	F	P	N/A	F	F	P
405	825 x 2012 x 44	FD30	Wood	Wood	Single	4th floor	F	P	P	F	F	N/A	F	P	P
406	825 x 2010 x 44	FD30	Wood	Wood	Single	4th floor	P	P	P	F	P	N/A	F	P	P
407	825 x 2010 x 44	FD30	Wood	Wood	Single	4th floor	F	P	F	F	F	N/A	F	P	P
408	825 x 2010 x 44	FD30	Wood	Wood	Single	4th floor	P	P	P	F	P	N/A	F	P	P
409	820 x 2010 x 44	FD30	Wood	Wood	Single	4th floor	P	P	P	F	P	N/A	F	F	P
410	825 x 2012 x 44	FD30	Wood	Wood	Single	4th floor	F	P	P	F	P	N/A	F	F	P
411	Not Available														
412	820 x 2010 x 44	FD30	Wood	Wood	Single	4th floor	P	P	P	F	P	N/A	F	P	P
413	825 x 2012 x 44	FD30	Wood	Wood	Single	4th floor	P	P	P	F	P	N/A	F	P	P
414	825 x 2010 x 44	FD30	Wood	Wood	Single	4th floor	P	P	P	F	P	N/A	F	P	P
415	825 x 2012 x 44	FD30	Wood	Wood	Single	4th floor	P	P	P	F	P	N/A	F	P	P
416	825 x 2010 x 44	FD30	Wood	Wood	Single	4th floor	P	P	F	F	P	N/A	F	P	P

Level 4 – Photos



Flat 401



Flat 402



Flat 403



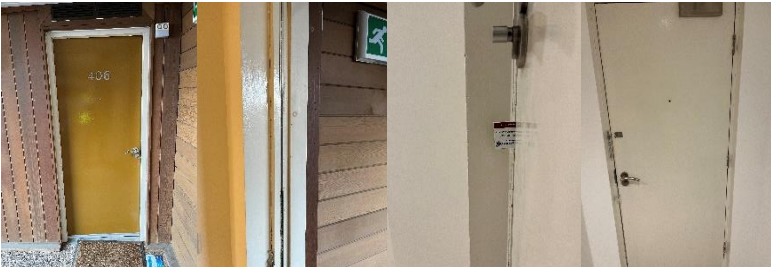
Flat 404



Flat 405



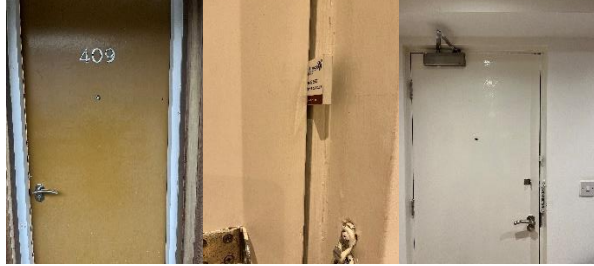
Flat 406



Flat 407



Flat 409



Flat 410



Flat 412



Flat 414



Flat 415



Flat 416



401	FRAME - No Faults. Minor damage to bottom of frame. HINGES - No Faults. LOCKSET – No thumb turn. SEALS - No Intumescent pads on hinges and keep. CLOSER – Ease and Adjust. SIGNAGE - N/A. GAPS – Gaps Excessive. DOOR – New door 8135 x 2130 x 44. STRUCTURE - No Faults. DOOR FAILED
402	FRAME - No Faults. HINGES – Screw missing of top hinge. LOCKSET – Screws loose in keep. Intumescent seal missing from Jam. SEALS - No Intumescent pads on hinges and keep. CLOSER – Ease and Adjust. SIGNAGE - N/A. GAPS – Ease and Adjust. DOOR – No Faults. STRUCTURE - No Faults. DOOR FAILED
403	FRAME - No Faults. HINGES - No Faults. LOCKSET – No Faults. SEALS - No Intumescent pads on hinges and keep. CLOSER – Dragging on the floor. Brush seal on the back of door. SIGNAGE - N/A. GAPS – Ease and Adjust. DOOR – No Faults. STRUCTURE - No Faults. DOOR FAILED
404	FRAME - No Faults. HINGES - No Faults. LOCKSET – No Faults. SEALS - No Intumescent pad on frame jam, hinges and keep. CLOSER – Ease and Adjust. SIGNAGE - N/A. GAPS – Gaps excessive. DOOR – New door needed 833 x 2015 x 44. STRUCTURE - No Faults. DOOR FAILED
405	FRAME – Make good bottom of jam. HINGES - No Faults. LOCKSET – No Faults. SEALS - No Intumescent pads on hinges and keep. CLOSER – Ease and Adjust. SIGNAGE - N/A. GAPS – Ease and Adjust. DOOR – No Faults. STRUCTURE - No Faults. DOOR FAILED
406	FRAME – No Faults. HINGES - No Faults. LOCKSET – No Faults. SEALS - No Intumescent pads on hinges and keep. Right hand side seal missing. CLOSER – No Faults. SIGNAGE - N/A. GAPS – Ease and Adjust. DOOR – No Faults. STRUCTURE - No Faults. DOOR FAILED
407	FRAME – Joints open and out of line. Damage to Frame. HINGES - No Faults. LOCKSET – Ease and Adjust. Handle loose so needs tightening. SEALS - No Intumescent pads on hinges and keep. CLOSER – Ease and Adjust. SIGNAGE - N/A. GAPS – Ease and Adjust. DOOR – No Faults. STRUCTURE - No Faults. DOOR FAILED
408	FRAME - No Faults. HINGES - No Faults. LOCKSET – No Faults. SEALS - No Intumescent pad on hinges and keep. CLOSER – Need adjusting to prevent future damage. SIGNAGE - N/A. GAPS – Ease and Adjust. DOOR – No Faults. STRUCTURE - No Faults. DOOR FAILED
409	FRAME - No Faults. HINGES - No Faults. LOCKSET – No Faults. SEALS - No Intumescent pads on hinges and keep. CLOSER – No Faults. SIGNAGE - N/A. GAPS – Gaps excessive. Door needs replacing. DOOR – New door 830 x 2040 x 44. STRUCTURE - No Faults. DOOR FAILED
410	FRAME – Rot to the bottom of the Jam. Needs to be made good. HINGES - No Faults. LOCKSET – No Faults. SEALS - No Intumescent pads on hinges and keep. CLOSER – Ease and Adjust action. SIGNAGE - N/A. GAPS – New Door. Gaps excessive. DOOR – New Door 828 x 2030 x 44. STRUCTURE - No Faults. DOOR FAILED
411	Not Available
412	FRAME - No Faults. HINGES - No Faults. LOCKSET – No Faults. SEALS - No Intumescent pads on hinges and keep. CLOSER – No Faults. SIGNAGE - N/A. GAPS – Ease and Adjust. DOOR – No Faults. STRUCTURE - No Faults. DOOR FAILED
413	FRAME - No Faults. HINGES - No Faults. LOCKSET – No Faults. SEALS - No Intumescent pads on hinges and keep. CLOSER – No Faults. SIGNAGE - N/A. GAPS – Ease and Adjust. DOOR – No Faults. STRUCTURE - No Faults. DOOR FAILED
414	FRAME - No Faults. HINGES - No Faults. LOCKSET – No Faults. SEALS - No Intumescent pads on hinges and keep. CLOSER – No Faults. SIGNAGE - N/A. GAPS – Ease and Adjust. DOOR – No Faults. STRUCTURE - No Faults. DOOR FAILED
415	FRAME - No Faults. HINGES - No Faults. LOCKSET – No Faults. SEALS - No Intumescent pads on hinges and keep. CLOSER – No Faults. SIGNAGE - N/A. GAPS – Ease and Adjust. DOOR – No Faults. STRUCTURE - No Faults. DOOR FAILED
416	FRAME - No Faults. HINGES - No Faults. LOCKSET – Loose Handle. SEALS - No Intumescent pads on hinges and keep. CLOSER – No Faults. SIGNAGE - N/A. GAPS – Ease and Adjust. DOOR – No Faults. STRUCTURE - No Faults. DOOR FAILED
Fire Door North Block 4th floor	FRAME – No Faults. HINGES – No Faults. LOCKSET – N/A. SEALS – No Intumescent pads on hinges and keep. Rubber seal is over the intumescent seal. CLOSER – No Faults. SIGNAGE No Faults. GAPS – Ease and Adjust. DOOR – No Faults. STRUCTURE - No Faults. DOOR FAILED
Fire Door South Block Stair Case 4th Floor	FRAME – Stops should be glued and screwed. HINGES – No Faults. LOCKSET – N/A. SEALS – No Intumescent pads on hinges. No Intumescent strips. CLOSER – Ease and Adjust. SIGNAGE No Faults. GAPS – Ease and Adjust. DOOR – No Faults. STRUCTURE - No Faults. DOOR FAILED

Doors Overview - Level 5

Door ID	Dimensions	Door Rating	Door Material	Frame Material	Door Type	Location	Frame Condition	Hinges Condition	Lockset Condition	Seals Condition	Closer Condition	Signage Condition	Gaps Condition	Door Condition	Structure Condition
Fire Door South Block Stair Case 5th floor															
	825 x 2010 x 55	FD60	Wood	Wood	Single	5th Floor	P	P	N/A	F	F	P	F	F	P
501	825 x 2012 x 44	FD30	Wood	Wood	Single	5th floor	P	P	F	F	F	N/A	P	F	P
502	860 x 2000 x 44	FD30	Metal	Metal	Single	5th floor	P	P	P	F	F	N/A	P	P	P
503	825 x 2010 x 44	FD30	Wood	Wood	Single	5th floor	P	P	F	F	F	N/A	F	F	P
504	825 x 2015 x 44	FD30	Wood	Wood	Single	5th floor	P	P	F	F	P	N/A	F	P	P
505	825 x 2012 x 44	FD30	Wood	Wood	Single	5th floor	P	P	P	F	P	N/A	F	P	P
506	Not Available														
507	Not Available														
508	Not Available														
509	Not Available														
510	825 x 2010 x 44	FD30	Wood	Wood	Single	5th floor	F	F	P	F	F	N/A	P	F	F
511	860 x 2000 x 44	FD30	Wood	Wood	Single	5th floor	P	P	P	F	F	N/A	P	P	P

Level 5 – Photos



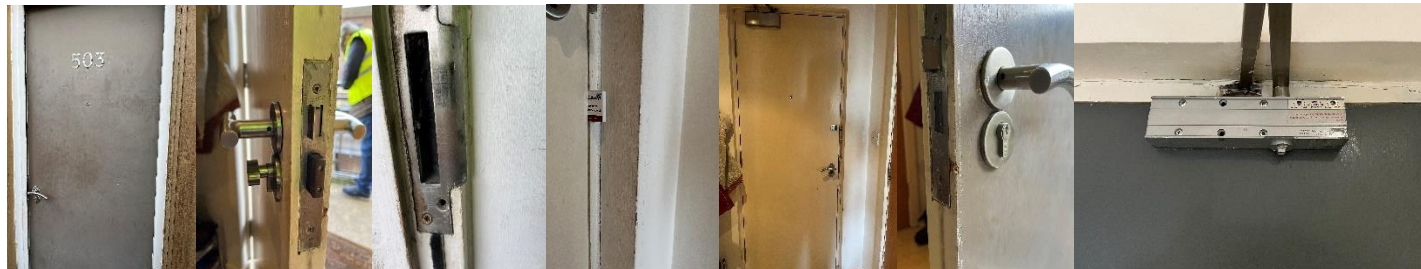
Flat 501



Flat 502



Flat 503



Flat 504



Flat 505



Flat 506



Flat 507



Flat 508



Flat 509



Flat 510



Flat 511



501	FRAME - No Faults. HINGES - No Faults. LOCKSET – Loose and needs adjusting. SEALS - No Intumescent pads on hinges and keep. CLOSER – Cover missing and need replacing. SIGNAGE - N/A. GAPS – Ease and Adjust. DOOR – Damage to the edge of door and can be made good. STRUCTURE - No Faults. DOOR FAILED
502	FRAME - No Faults. HINGES - No Faults. LOCKSET – No Faults. SEALS – Only brush seals. No Intumescent pads on hinges and keep. CLOSER – Needs adjusting. SIGNAGE - N/A. GAPS – No Faults. DOOR – No Faults. STRUCTURE - No Faults. DOOR FAILED
503	FRAME - No Faults. HINGES - No Faults. LOCKSET – Loose and needs adjusting. Screw missing on keep. SEALS - No Intumescent pads on hinges and keep. CLOSER – Needs adjusting. SIGNAGE - N/A. GAPS – Ease and Adjust. DOOR – Damage to edge of door and can be made good. STRUCTURE - No Faults. DOOR FAILED
504	FRAME - No Faults. HINGES - No Faults. LOCKSET – Ease and Adjust. SEALS – No Intumescent pads on hinges and keep. CLOSER – No Faults. SIGNAGE - N/A. GAPS – Ease and Adjust. DOOR – No Faults. STRUCTURE - No Faults. DOOR FAILED
505	FRAME - No Faults. HINGES - No Faults. LOCKSET – No Faults. SEALS – No Intumescent pads on hinges and keep. CLOSER – No Faults. SIGNAGE - N/A. GAPS – Ease and Adjust. DOOR – No Faults. STRUCTURE - No Faults. DOOR FAILED
506	Not Available
507	Not Available
508	Not Available
509	Not Available
510	FRAME – Rotten right hand side Jam and Joint. New frame or repair. HINGES – Screws missing. LOCKSET – No Faults. SEALS – No Intumescent pads on hinges and keep. CLOSER – Cover missing. SIGNAGE - N/A. GAPS – No Faults. DOOR – New door frame 895 x 2080 x 44. STRUCTURE – New frame. DOOR FAILED
511	FRAME - No Faults. HINGES - No Faults. LOCKSET – No Faults. SEALS – Only brush seals. No Intumescent pads on hinges and keep. CLOSER – Needs adjusting. SIGNAGE - N/A. GAPS – No Faults. DOOR – No Faults. STRUCTURE - No Faults. DOOR FAILED
Fire Door South Block Stair Case 5th floor	FRAME – No Faults. HINGES – No Faults. LOCKSET – N/A. SEALS – No Intumescent pads on hinges. No Intumescent seals missing. CLOSER – Ease and Adjust. SIGNAGE No Faults. GAPS – Ease and Adjust. DOOR – Damage to door face and can be made good. STRUCTURE - No Faults. DOOR FAILED

Doors Overview - Level 6

Door ID	Dimensions	Door Rating	Door Material	Frame Material	Door Type	Location	Frame Condition	Hinges Condition	Lockset Condition	Seals Condition	Closer Condition	Signage Condition	Gaps Condition	Door Condition	Structure Condition
Fire Door South Block Stair Case 6th floor															
	825 x 2010 x 55	FD60	Wood	Wood	Single	6th Floor	F	F	N/A	F	P	P		F	F
601	825 x 2010 x 44	FD30	Wood	Wood	Single	6th Floor	P	P	P	F	P	N/A	F	P	P
602	825 x 2010 x 44	FD30	Wood	Wood	Single	6th Floor	F	F	F	F	F	N/A	F	F	P
603	825 x 2010 x 44	FD30	Wood	Wood	Single	6th Floor	P	F	P	F	P	N/A	P	P	P
604	825 x 2012 x 44	FD30	Wood	Wood	Single	6th Floor	P	P	F	F	F	N/A	F	F	P

Level 6 – Photos



Flat 601



Flat 602



Flat 603



Flat 604



601	FRAME - No Faults. HINGES - No Faults. LOCKSET – No Faults. SEALS – No Intumescent pads on hinges and keep plus 2 mortise locks. CLOSER – No Faults. SIGNAGE - N/A. GAPS – Ease and Adjust. DOOR – No Faults. STRUCTURE - No Faults. DOOR FAILED
602	FRAME – Over cut around the keep and can be repaired. HINGES – Screws are loose. LOCKSET – Loose Handle. Grub screw missing and keep over cut. SEALS – No Intumescent seal on hinge and keep. Intumescent seal is detached. CLOSER – Ease and Adjust. SIGNAGE - N/A. GAPS – Ease and Adjust. DOOR – Damage to the edge of the door. Lipping detached. 830 x 2020 x 44. STRUCTURE - No Faults. DOOR FAILED
603	FRAME - No Faults. HINGES – Different screws. LOCKSET – No Faults. SEALS – No Intumescent pads on hinges and keep. CLOSER – No Faults. SIGNAGE - N/A. GAPS – No Faults. DOOR – No Faults. STRUCTURE - No Faults. DOOR FAILED
604	FRAME – Needs decoration. HINGES - No Faults. LOCKSET – No thumb turn on the inside of door. SEALS – No Intumescent pads on hinges and keep. CLOSER – No Faults. SIGNAGE - N/A. GAPS – Gaps excessive. DOOR – New Door 8030 x 3035 x 44. STRUCTURE - No Faults. DOOR FAILED
<hr/>	
Fire Door South Block Stair Case 6th floor	FRAME – Frame rotten at the bottom. Frame needs to be replaced. HINGES – Screw not fitted correctly. LOCKSET – N/A. SEALS – No Intumescent pads and strips. CLOSER – No Faults. SIGNAGE No Faults. GAPS – No faults. DOOR – New door frame. Overall frame size 880 x 2060 x 55. STRUCTURE - No Faults. DOOR FAILED
